

External assessment 2024

Multiple choice question book

Engineering

General instruction

- Work in this book will not be marked.

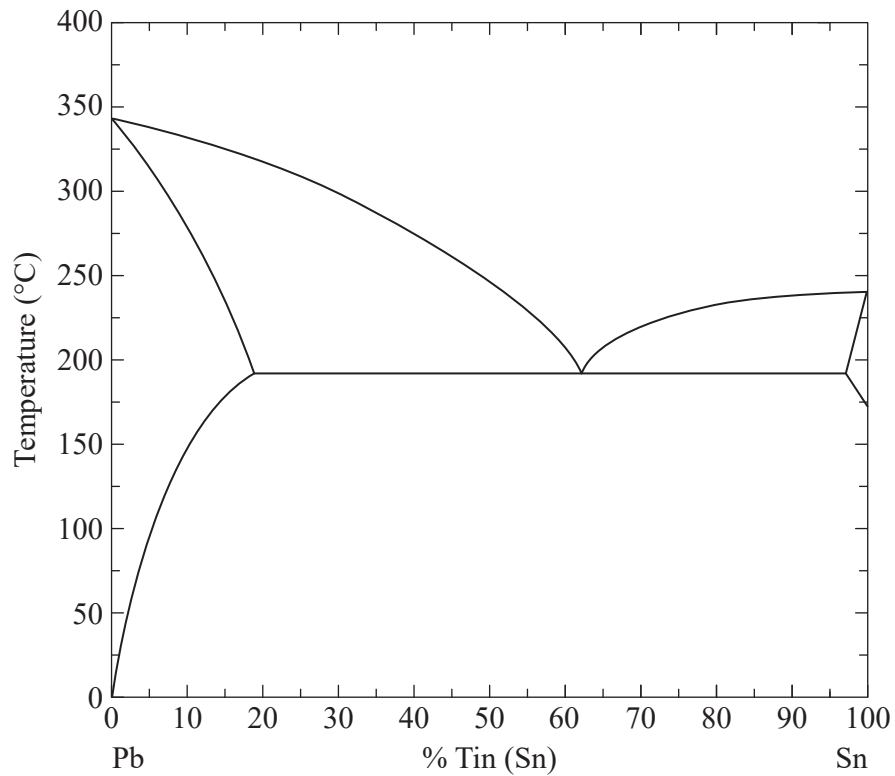
Section 1

Instruction

- Respond to these questions in the question and response book.
-

QUESTION 1

A lead–tin thermal-equilibrium phase diagram is shown.



What phase would be present in an alloy containing 35% Sn at a temperature of 225 °C?

- (A) β
- (B) L
- (C) $\alpha + \beta$
- (D) $\alpha + L$

THIS PAGE WILL NOT BE MARKED

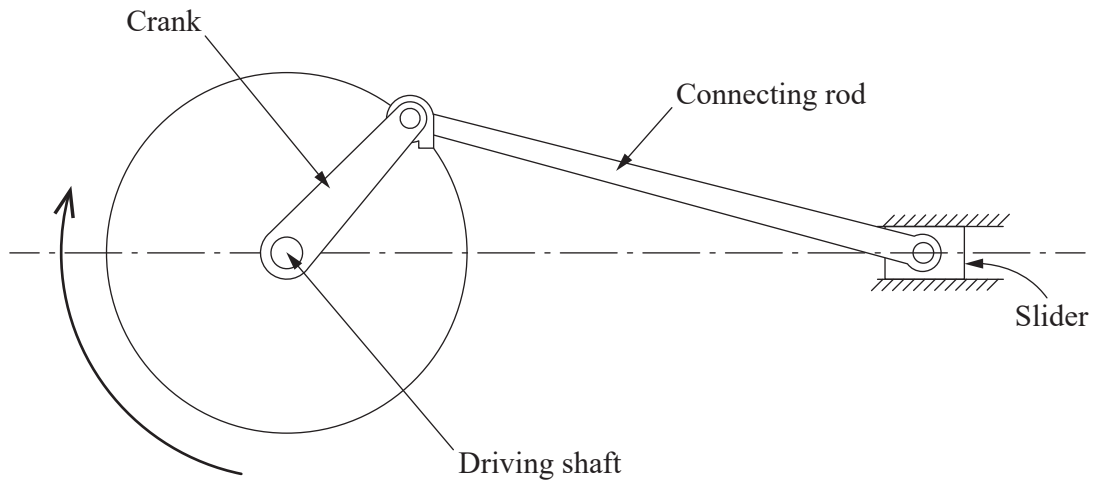
QUESTION 2

Which material is most suitable for highly tempered punches and axles?

- (A) mild carbon steel
- (B) medium carbon steel
- (C) high carbon steel
- (D) ultra-high carbon steel

QUESTION 3

The crank moves continually in the direction shown.



Identify the type of motion that best describes what is experienced by the slider.

- (A) oscillatory
- (B) reciprocal
- (C) rotary
- (D) linear

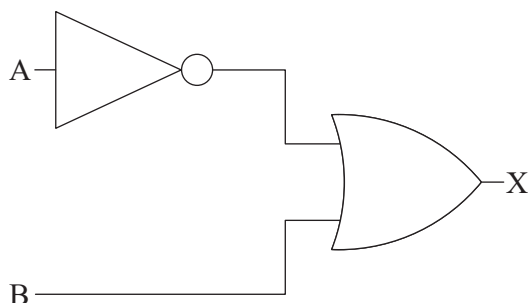
QUESTION 4

Which plastic is the most suitable for use as a medical screw?

- (A) nylon
- (B) polypropylene
- (C) polylactic acid
- (D) polyvinyl chloride

QUESTION 5

A logic gate circuit is shown.



Which truth table shows the correct output column for the logic gate circuit?

(A)

| A | B | X |
|---|---|---|
| 0 | 0 | 1 |
| 0 | 1 | 1 |
| 1 | 0 | 0 |
| 1 | 1 | 1 |

(B)

| A | B | X |
|---|---|---|
| 0 | 0 | 0 |
| 0 | 1 | 1 |
| 1 | 0 | 1 |
| 1 | 1 | 1 |

(C)

| A | B | X |
|---|---|---|
| 0 | 0 | 0 |
| 0 | 1 | 1 |
| 1 | 0 | 0 |
| 1 | 1 | 0 |

(D)

| A | B | X |
|---|---|---|
| 0 | 0 | 0 |
| 0 | 1 | 0 |
| 1 | 0 | 0 |
| 1 | 1 | 1 |

QUESTION 6

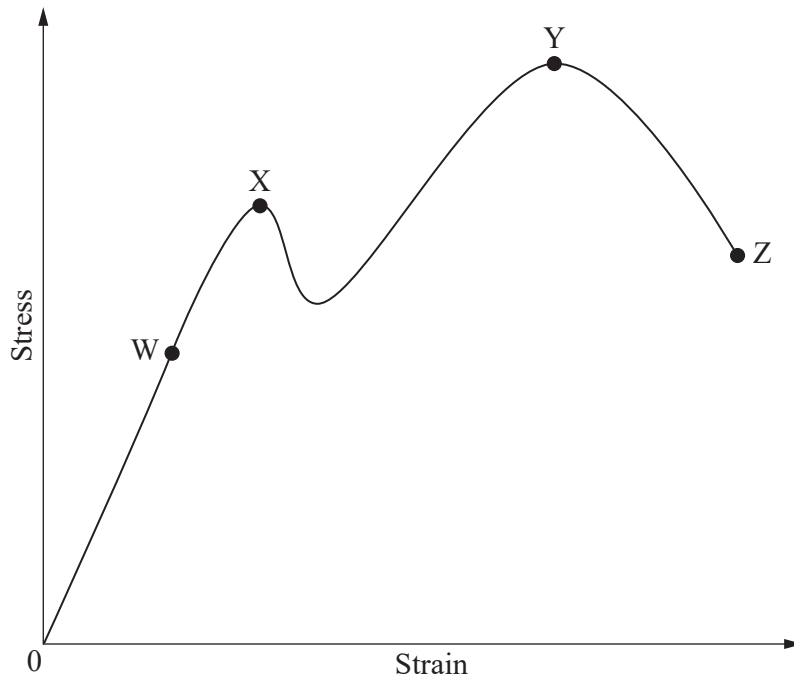
A cyclist exerts an effort force of 125 N on the pedal of a bicycle. The load force on the rear wheel is 500 N. The velocity ratio of the bicycle is 5.

What is the efficiency of the bicycle?

- (A) 125%
- (B) 80%
- (C) 8%
- (D) 5%

QUESTION 7

A stress–strain diagram is shown.



Identify the key feature represented by point X on the diagram.

- (A) yield stress
- (B) plastic limit
- (C) proportional limit
- (D) ultimate tensile strength

THIS PAGE WILL NOT BE MARKED

QUESTION 8

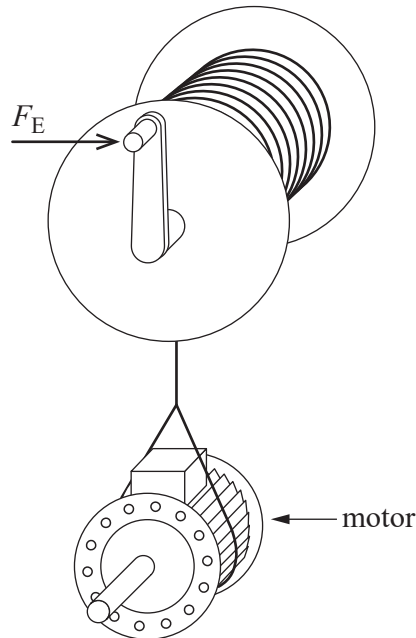
A fibreglass swimming pool has a potential energy of 98 kJ when raised 20 m from the ground by a crane.

The mass of the swimming pool is

- (A) 500 kg.
- (B) 4900 kg.
- (C) 10 000 kg.
- (D) 48 020 kg.

QUESTION 9

A drum winch is used to vertically raise a 50 kg motor as shown. It has a velocity ratio of 3 and is 90% efficient.



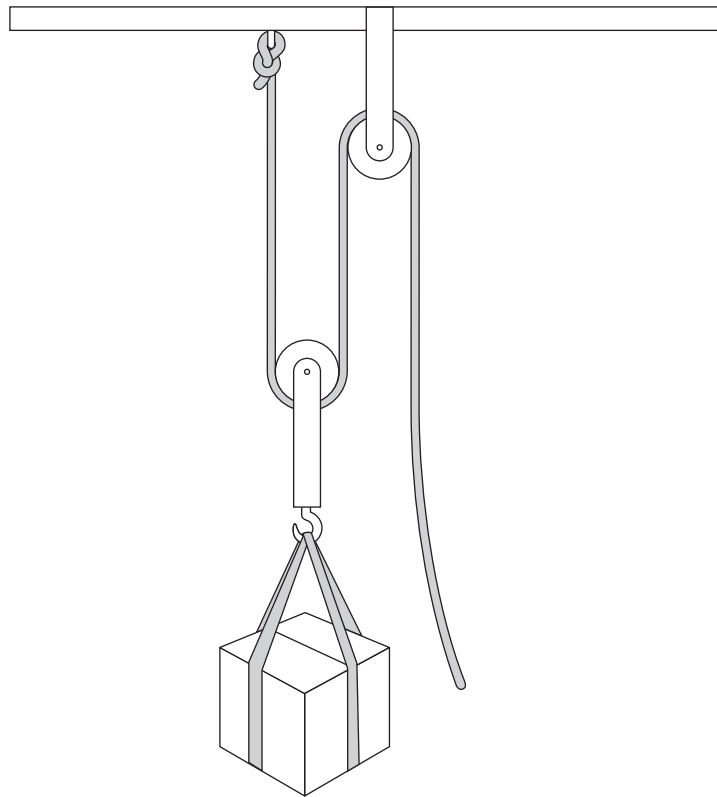
What is the minimum effort force required to raise the motor using the drum winch?

- (A) 18.52 N
- (B) 163.33 N
- (C) 181.48 N
- (D) 1323.00 N

THIS PAGE WILL NOT BE MARKED

QUESTION 10

A 15 N force is required to raise a box a distance of 12 m using the simple pulley system shown. Assume the friction in the rope is negligible.



What is the work done to raise the box 12 m?

- (A) 3 J
- (B) 90 J
- (C) 180 J
- (D) 360 J

